

BioidTech

The logo for BioidTech features the company name in a bold, black, sans-serif font. To the right of the text is a graphic consisting of a red L-shaped line that forms a corner, with a red hexagon positioned at the top right end of the horizontal line.

BIOID-Face

TOP PERFORMANCE AT FACE VALUE



BIOID FACE RECOGNITION AT FOREFRONT OF INNOVATION

AI – Neural Networks / Machine Learning Leads the Way The superb accuracy of **BioID** Face Recognition for both Identification (1:N Match) and Verification (1:1 Match) is ensured by a combination of convolutional neural networks that utilize the most up to date architecture and the most progressive methods of training.

BIOID-Face is based on cutting edge biometrics. The algorithm at the core of our technology is based on convolutional neural network (CNN) that uses machine learning techniques.

Unlike “traditional” algorithms based on mathematical models, the **BIOID-Face** algorithm automatically extracts distinctive features and is robust to angles, facial expressions, pose, illumination, partial occlusions and artifacts, and low image quality.

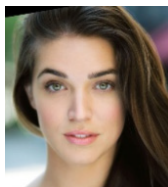
Trained on diverse databases, the algorithm is invariant across nationalities and shows high accuracy not only for Asians, Europeans and Africans, but also for different nations within these continents, different ages and genders.

BIOID-Face is ranked in the TOP-10 of most accurate face algorithm vendors in the world in NIST:

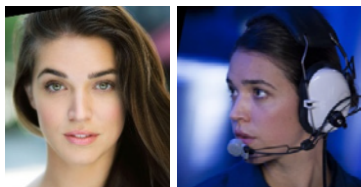
Visa dataset accuracy **TPR at FPR 10^{-5} = 99.2%**

BIOID-FACE EMBEDDED FUNCTIONS

**FACE
DETECTION**



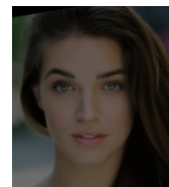
**1:1
MATCHING**



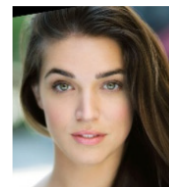
**1:N
MATCHING**



**QUALITY
ASSESSMENT**



**AGE AND
GENDER
RECOGNITION**



APPLICABLE IN A WIDE RANGE OF MARKETS

ACCESS CONTROL



Secure, accurate and user friendly access control & time attendance using face recognition

FACE FORENSICS



Fast search of suspects identified in video records. Rapid identification of suspects and victims in field forensic applications

PRISON MANAGEMENT



Fast ID checking of prisoners as well as visitors

ID MANAGEMENT



Real-time verification and identification against millions of records in an enrollment database

IMMIGRATION AND PASSPORT CONTROL



Reliable identity verification for fast border crossing; entry prevention of unwanted visitors

MARKETING ANALYTICS



Biometrics plays a key role in neuromarketing market research to understand a person's emotional/ cognitive response towards an event

CITY SURVEILLANCE



Online face recognition using regular CCTV camera feeds deployed in Safe Cities projects

RETAIL INTELLIGENCE



Biometrics for easier and faster payments for personalized in-store marketing

VIP IDENTIFICATION



Real-time verification and identification against millions of records in an enrollment database

LIGHTNING FAST PERFORMANCE AND ACCURACY BENEFITS

At FAR 10^{-6}
For ID/Visa vs ID/
Visa images

99.46%

At FAR 10^{-6}
For N:N Search

99.99%

Upto **4ms** on
GPU **25ms** on
CPU*

DETECTION

Upto **3ms** on
GPU **120ms** on
CPU*

EXTRACTION

1s
For search
against
30 000 000

MATCHING

* On Core i7 7800 X 6 Cores

**FOR THE NEEDS
OF THE REAL
WORLD**

Our Technology has proven its efficiency in real-world projects working with databases including hundreds of millions faces.

**AT THE SPEED
OF REAL TIME**

Our Technology has been employed in highly demanding nation wide projects, processing millions of operations in real time.

BIOID-FACE

**OVERCOMING
THE CHALLENGES
OF REAL LIFE**

Our System is trained on diverse databases from around the world demonstrating high accuracy irrespective of race, ethnicity or country of origin of the enrollees

**AMONGST NIST
TOP 10 REAL
BEST IN CLASS**

In the latest FRVT leader board Our Technology has been ranked as the 9th vendor over all (6th most accurate vendor, 12th most accurate algorithm).

TECHNOLOGY DIFFERENTIATORS AND BENEFITS



HIGH SPEED AND PERFORMANCE

We process up to 150 images in real time using one GPU and search against a database of 100M images in 1 second with a single CPU.

**OUR HIGH-SPEED
PROCESSING SAVES
YOU MONEY**

**PROTECT YOUR
SYSTEMS FROM
TAMPERING**

ANTI SPOOFING

Advanced liveness detection algorithms seamlessly prevent unauthorized access by using printed or displayed images, video and masks.



CROSS PLATFORMS SW AND COTS HW
BIOID face recognition can run on highspeed GPU, standard CPU and mobile ARM platforms. Choose between Linux, Windows, Android or iOS platforms.

**NO RISK OF GETTING LOCKED
IN TO EXPENSIVE OR
SPECIALIZED HARDWARE
AND SOFTWARE**



SECURITY AND PRIVACY PROTECTION

All biometric data can be used on Android or iOS platforms and is transferred as encrypted templates that are irreversible.

**PROTECT YOUR
DATA FROM MISUSE
OR TAMPERING**

CROSS AGE, GENDER AND ETHNICITY INVARIANCE

Our advanced algorithms can classify faces by age, race and ethnicity.



BIOID-FACE RECOGNIZES YOU BETTER THAN YOU

CAN Images from any source (ID photo, selfie, CCTV feeds or social images) and subjects in any position can be recognized, despite angles and turns, facial expressions, glasses, occlusions or gender transformations.

TECHNICAL SPECIFICATIONS

SUPPORTED OS	SUPPORTED HW	SDK LANGUAGES	HW REQUIREMENTS
<ul style="list-style-type: none">LinuxWindowsAndroidiOS64bit & 32bit where applicable	<ul style="list-style-type: none">COTS HardwareAny type of GPU with CUDA supportAny type of CPUMobile CPU with ARM architecture	<ul style="list-style-type: none">C++.netJava	<ul style="list-style-type: none">Minimum GPU requirements: NVIDIA GTX 1060, 6 Gb RAMRecommended GPU: NVIDIA GTX 1080Ti or Tesla P40Recommended CPU: Intel Core i7 (Coffee Lake or SkyLake generation)Minimum RAM: 6GbRecommended RAM: 16 Gb

ADDITIONAL SPECIFICATIONS

Supports ISO/IEC 19794-5 compliant images (480x680 jpeg color images)

Works with min 20 pixels between the eyes

Template size is 1024 bytes in memory

More than 5 million matches per sec per core

Quality Assessment, gender and age detection

Rank performance; 99.18% Rank 1 recognition accuracy for ID/Visa vs Wild

ABOUT BIOID

BIOID is a Swiss Technology company in the business of design, development and distribution of Identity Management solutions



Corporate Headquarters:
Geneva, Switzerland



Software Engineering: India
and US



R&D: US and Europe



Regional/Partner Sales offices:
USA, Switzerland, India, Indonesia

FOR MORE INFORMATION
PLEASE CONTACT US

info@bioidtech.ch

LEARN MORE
ABOUT US

www.bioidtech.ch